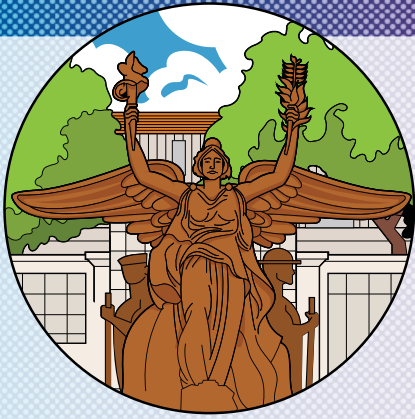


RIDING BASICS

KEEP YOUR CHANGE

Your school ID is all you need - most services are FREE with your UT ID. Swipe your ID at the fare box and take a seat.



IT'S ALL YOURS

Riding CapMetro for free allows you to spend your money on enjoying life both on and off campus. Our range of services includes UT shuttles, buses, rail, on-demand rideshare and more! Unlock what Austin has to offer like inspiring study spots, new restaurants, concerts, downtown internships and beyond.



WHENEVER YOU NEED US

Up late "studying"? Night Owl buses run from midnight until 3 a.m. and CapMetro Rapid runs until about midnight seven days a week all year round. Look for the 480-level routes in the Trip Planner to find the best way home from your late-night haunts.



HOW TO PLAN YOUR TRIP

Download the CapMetro App or visit capmetro.org to plan a trip around Austin. It's easy to ride CapMetro with these on-the-go travel tools:

- Ticket Purchasing
- Trip Planner
- Schedules & Maps
- Next Departure Information
- Service Alerts



Start by entering your destination, an intersection (like 2nd/Congress) or a Stop ID, and you're ready to freely move about Austin.

And don't forget to sign up for CapMetro Alerts to receive service notifications about your specific bus route: CapMetro.org/Alerts

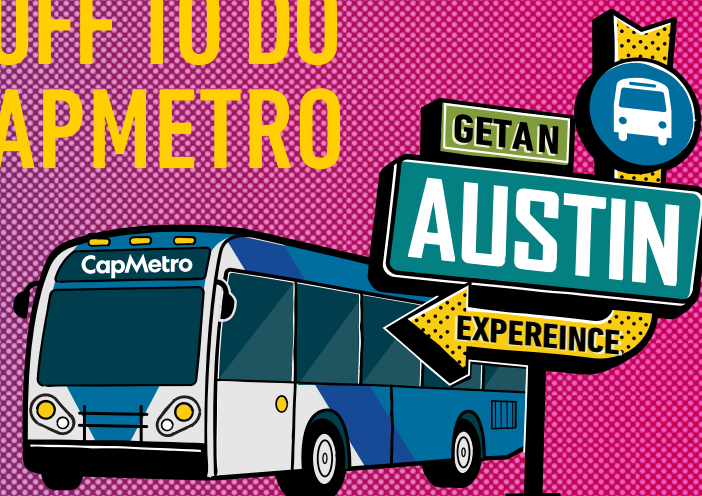
CapMetro

512.474.1200 | capmetro.org

TOP 20

PLACES TO GO, THINGS TO SEE & STUFF TO DO ON CAPMETRO

Updated August 2023

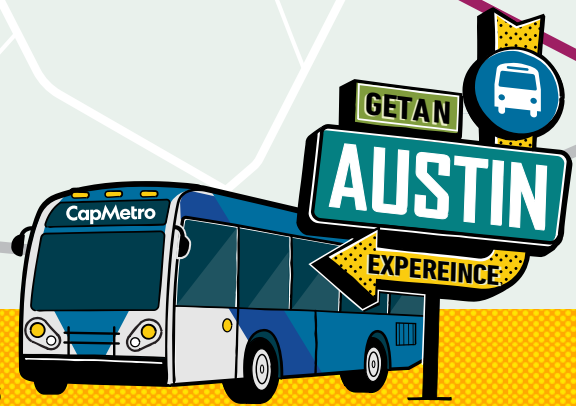


ROUTES TO POPULAR SPOTS

- | | |
|--|---|
| <p>A Barton Springs
30</p> <hr/> <p>B The Domain
3 803</p> <hr/> <p>C SoCo
1 801</p> <hr/> <p>D 6th Street
1 2 3 4 5
7 10 20 30 801
803 RL</p> <hr/> <p>E Coffee & Dining on Lake Austin
18</p> <hr/> <p>F State Capitol
1 3 5 7 10
20 30 663 801 803</p> <hr/> <p>G Bats Under the Congress Ave Bridge
1 7 20 801</p> <hr/> <p>H Q2 Stadium Austin FC
3 803 RL</p> <hr/> <p>I S. 1st Street Food Trailers
10</p> <hr/> <p>J Boardwalk Trail & Paddle Boarding at Ladybird Lake
7 20</p> | <p>K North Loop
1 7</p> <hr/> <p>L The Triangle
1 656 801</p> <hr/> <p>M Lamar Union
3 803</p> <hr/> <p>N Auditorium Shores & the Long Center
1 7 10
20 30 801</p> <hr/> <p>O Mueller Hangouts
10</p> <hr/> <p>P Eastside Eats
2 4 672 RL</p> <hr/> <p>Q Honky-Tonk Dancing on South Lamar
3 803</p> <hr/> <p>R Hyde Park Hangouts
1 7 656 801</p> <hr/> <p>S Burnet Road Thrifting
3 803</p> <hr/> <p>T Central Library
3 803</p> <hr/> <p>CapMetro Rail Red Line
RL</p> |
|--|---|



Note: Many bus routes overlap in the downtown area.



- A** Barton Springs
- B** The Domain
- C** SoCo
- D** 6th Street
- E** Coffee & Dining on Lake Austin
- F** State Capitol
- G** Bats Under the Congress Ave Bridge

- H** Q2 Stadium Austin FC
- I** S. 1st Street Food Trailers
- J** Boardwalk & Paddleboard at Ladybird Lake
- K** North Loop
- L** The Triangle
- M** Lamar Union
- N** Auditorium Shores & the Long Center

- O** Mueller Hangouts
- P** Eastside Eats
- Q** Honky-Tonk Dancing on Lamar
- R** Hyde Park Hangouts
- S** Burnet Road Thrifting
- T** Central Library

- ▲** Austin Essentials
- ◆** Food & Bevs
- ★** Fun-tivities!
- Events